

Beaconhill Community Primary School
Langdale Drive
Cramlington
Northumberland
NE23 8EH
Tel: 01670 714864
Fax: 01670 739302
Email: admin@beaconhill.northumberland.sch.uk
Headteacher: Mr Joel Routledge B.Ed NPQH

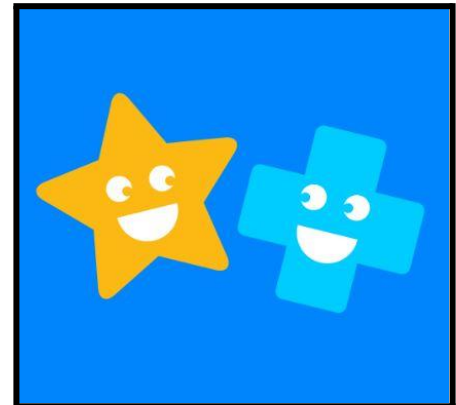


Friday 21st February

Dear Parents/Carers,

I am writing to remind parents and carers of our **Reception, Year One and Year Two** children that 'Doodle Maths' is available to support your child's **mathematical development at home**.

Doodle Maths is an **engaging and interactive platform** that provides **personalised learning** to help **reinforce and build upon** the **skills** that your child has been working on in school. The app covers a wide range of topics from **basic number recognition** to more **advanced problem-solving**, making it suitable for all abilities. It **adapts** to your child's progress and **learning** needs ensuring that they receive the **right level of challenge and support**.



We encourage a **little and often** approach with Doodle Maths. By using the app for just a **few minutes** each day, children can continuously **reinforce** their **learning** and **build confidence** in their mathematical abilities. Regular, 'bite-sized' practice ensures that **concepts** are **retained** and **understood** over time, without children feeling overwhelmed.

It is fantastic to see that some children have **engaged** so much with the **programme**. We have children in school who have achieved a **100+ day streak meaning** that they have logged onto the app for 100 or more **consecutive days**. Log in details have been shared already but if you have any questions about setting up or using the app, please don't hesitate to contact us.

I enjoy visiting classes to hand out **stickers, certificates** and **stationery** to celebrate good work on **Doodle**. I also use **Doodle Maths** at home with my son and he loves it!

We believe that Doodle Maths is a **fun** and **effective** way for children to **practise** their **maths** skills outside of school, and we hope you find it a **valuable addition** to your **home learning** routine. Thank you for your continued support.

Mr Routledge